

ATEX: CML 19ATEX3390U
IECEX: CML 19.0133U
UKEX: CML 21UKEX31146U

BPS4		
FSM-CT	FLVw-CT	EMTS-CS
FSM-CF	FLVw-CF	EMTS-CF
FSR-CT	FSS-CF	EMTF-CF
FSR-CF	FSU-NF	MTF-CF
FSE-CT	SM-A	MTFJ-CF
FSE-CF		PHT-NF
GT		AHT
		HWR-T
		HWP-T



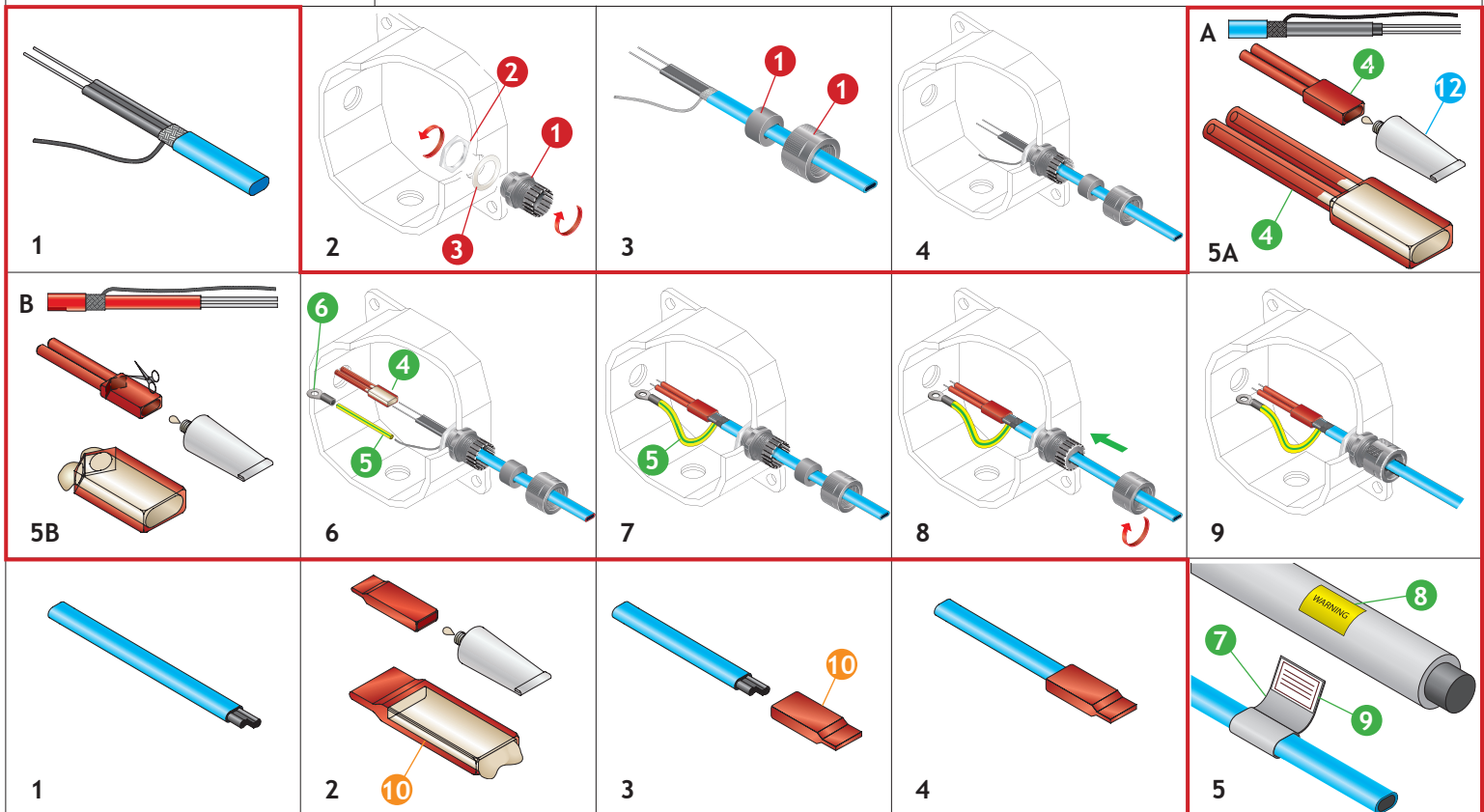
Made in the UK

FFG#	BPS4							BES#	RTV 40ml		

SPECIAL CONDITIONS FOR SAFE USE:
These termination kits and the cable that enters them shall be fixed to a secure mounting point.

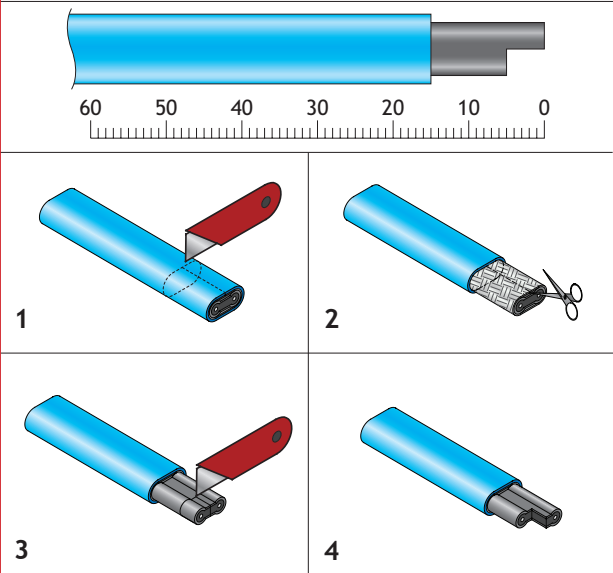
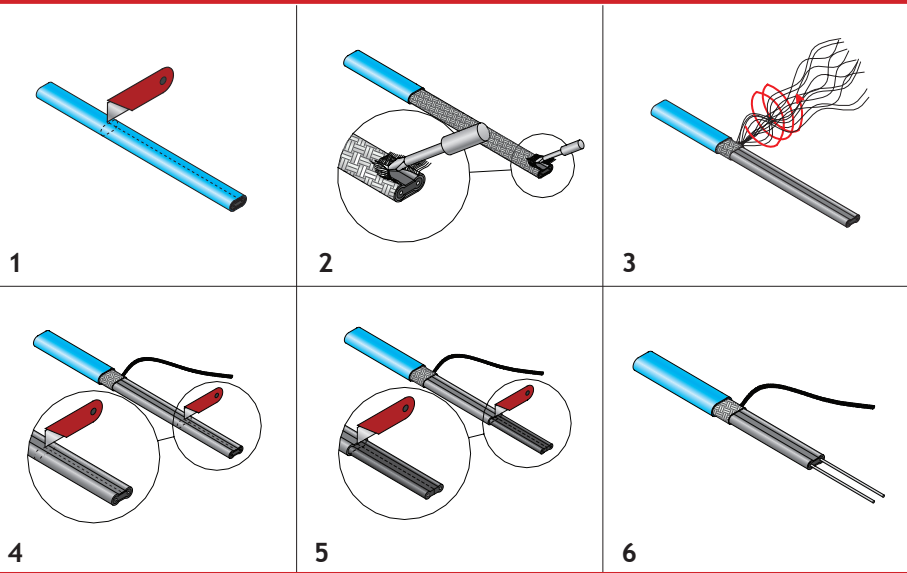
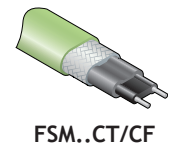
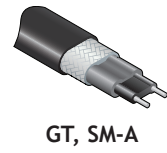
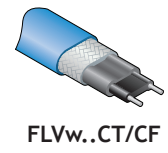
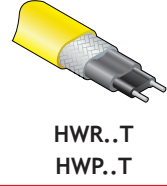
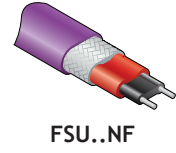
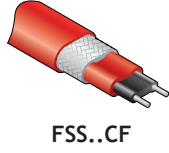
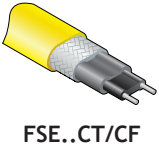
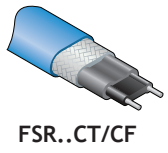
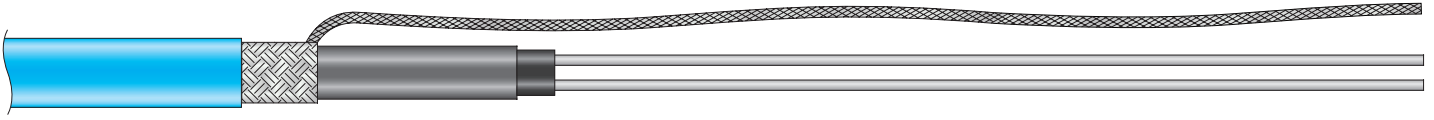
The component shall only be used with constant power or self-regulating trace heating cables within the following ranges:
-40°C to 180°C (Standard RTV), -40°C to 250°C (High temperature RTV).

This is particularly relevant when the trace heating cable is installed on pipework that has a temperature outside these ranges, in this situation, the termination devices shall be positioned outside the insulation, and the user/installer shall ensure that they are not exposed to UV radiation.

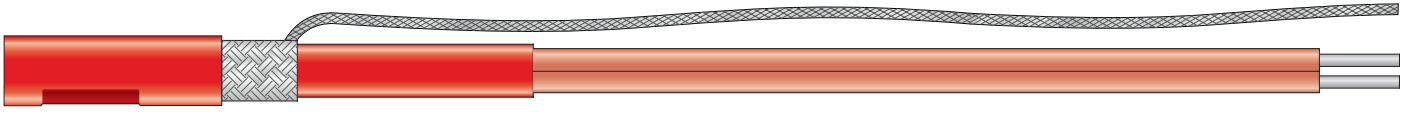


190 180 170 160 150 140 130 120 110 100 90 80 70 60 50 40 30 20 10 0

A



B



190 180 170 160 150 140 130 120 110 100 90 80 70 60 50 40 30 20 10 0

