

# INSTALLATION COMPONENTS

A range of miscellaneous components for use when installing Heat Trace products

## MISCELLANEOUS ANCILLARIES



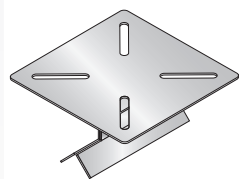
- PFS025/SS** Pipe fixing strap - for pipes up to 50mm (2") diameter.
- PFS050/SS** Pipe fixing strap - for pipes from 50mm (2") to 125mm (5") diameter.
- PFS100/SS** Pipe fixing strap - for pipes from 125mm (5") to 250mm (10") diameter.
- PFS160/SS** Pipe fixing strap - for pipes from 250mm (10") to 450mm (18") diameter.
- PFS200/SS** Pipe fixing strap - for pipes from 450mm (18") to 600mm (24") diameter.

Fixing Strap	Suitable for Pipe Sizes	Material	Length of Strap	Length of Slotted section
PFS025/SS	2"	SS304	320mm	160mm
PFS050/SS	2" - 5"	SS304	560mm	240mm
PFS100/SS	5" - 10"	SS304	960mm	400mm
PFS160/SS	10" - 18"	SS304	1600mm	800mm
PFS200/SS	18" - 24"	SS304	2075mm	1450mm

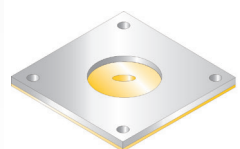
Dimension +/- 5%



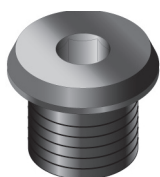
- Cut to length metal pipe fixing straps with a continuous slotted section, available in either galvanised or stainless steel.
- PFS/G or PFS/S** 30m x 11mm coil of banding supplied in dispensing box.
- BUC/G or BUC/S** Buckles (1 x required for each fixing strap).



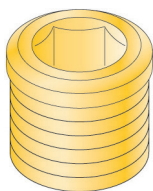
- SB/CMJB** Stainless steel support bracket for a CMJB.  
Dimensions: 120mm x 120mm x 75mm height.
- PBS/05-160** Stainless steel support bracket for the 'R' Series, R100, R130, R160, CMCT/W/VFC and CMET/W/VFC.  
Dimensions: 220mm x 200mm x 75mm height.
- PB/S** Stainless steel support bracket for CMCT, CMAT and CMCT/W  
Dimensions: 150mm x 150mm x 75mm height.
- PB/L** Stainless steel support bracket for CMECT/W  
Dimensions: 300mm x 200mm x 75mm height.



- LEK/U** Lagging entry kit. Protects heating cable when entering lagging and forms seal around cable entry to prevent water ingress.
- LEK/U/FFG1**  
**LEK/U/FFG3**  
**LEK/U/FFG5** (Kits supplied complete with aluminium plate, rubber seal, 4 self-tapping fixing screws, plastic gland and instruction card).



- BP/JB9000** M20 Blanking plug (plastic).  
Can be provided for use in either SAFE or HAZARDOUS Areas.
- BP/JB9000/M25** M25 Blanking plug (plastic).  
Can be provided for use in either SAFE or HAZARDOUS Areas.

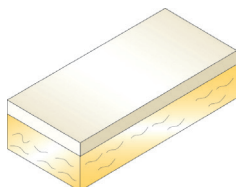


**BP/FL**

M20 Blanking plug (brass).  
Can be provided for use in either SAFE or HAZARDOUS Areas.

**BP/FL/M25**

M25 Blanking plug (brass).  
Can be provided for use in either SAFE or HAZARDOUS Areas.



**HBK**

Insulating heat break. Used to protect pipe mounted components from exposure to excessive pipe surface temperatures.

Mineral wool base with silicone rubber sheet.

Dimensions: 130mm x 60mm x 35mm high.

Max Withstand Temperature: 250°C (approx).



**CL**

Self-adhesive, vinyl CAUTION / WARNING label for fixing to insulated pipework or vessel to indicate that electric heating cable is installed beneath the thermal insulation. To be fitted on pipework at intervals NOT exceeding 6 metres.

For large quantities in alternative languages, please enquire for details.



Heat Trace Ltd, Mere's Edge, Chester Road, Helsby, Frodsham, Cheshire, WA6 0DJ, England.

Tel: +44 (0)1928 726451

[www.heat-trace.com](http://www.heat-trace.com)

Email: [info@heat-trace.com](mailto:info@heat-trace.com)